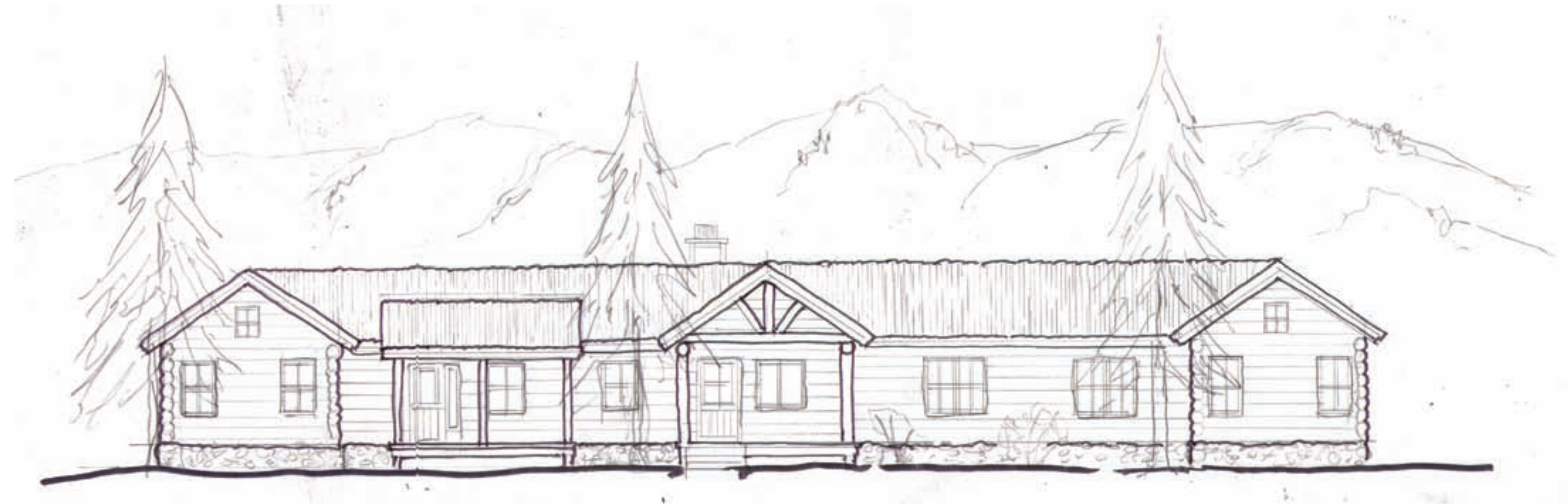




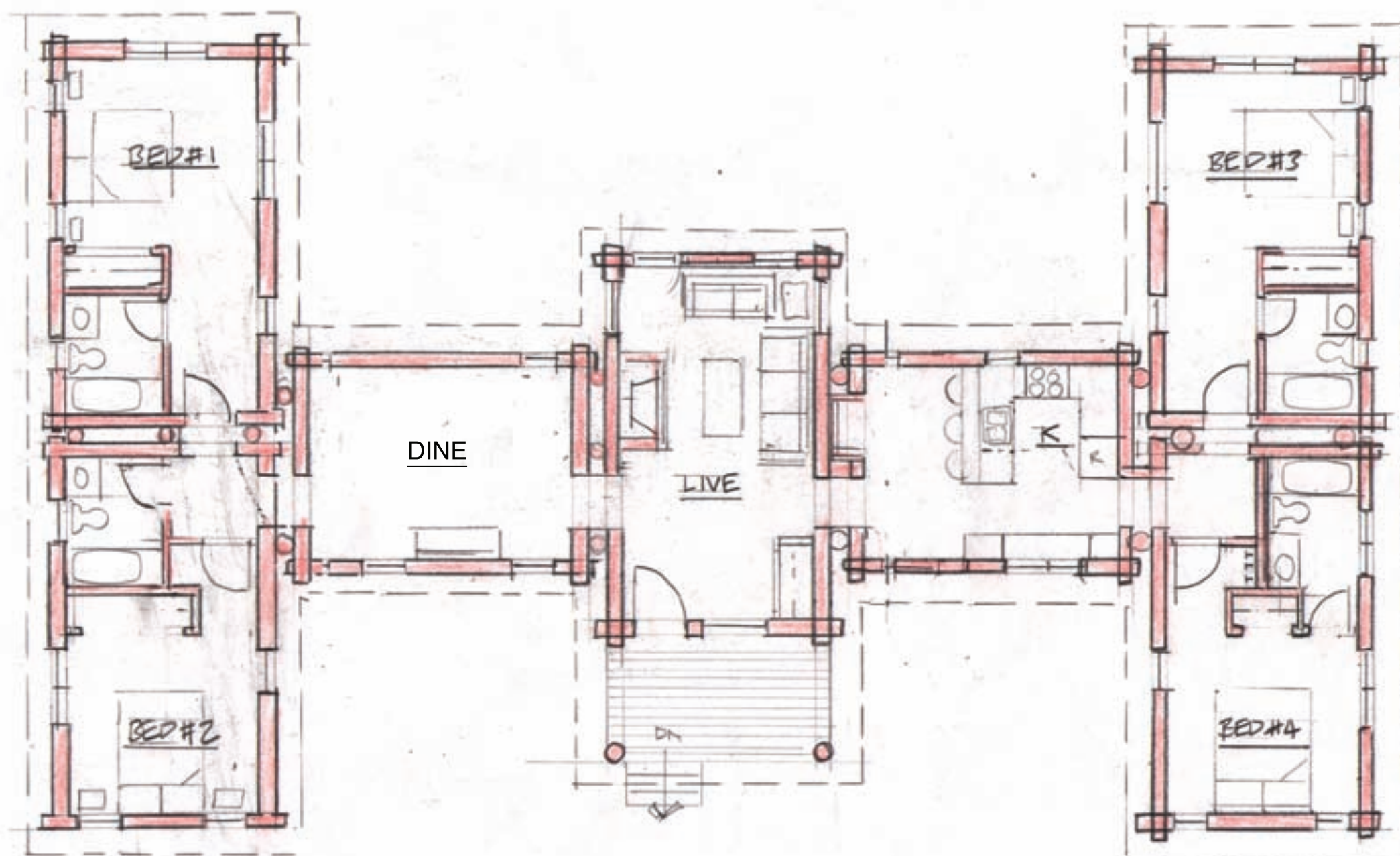
FRONT ELEVATION OPTION

SCALE: 1/8" = 1'-0"



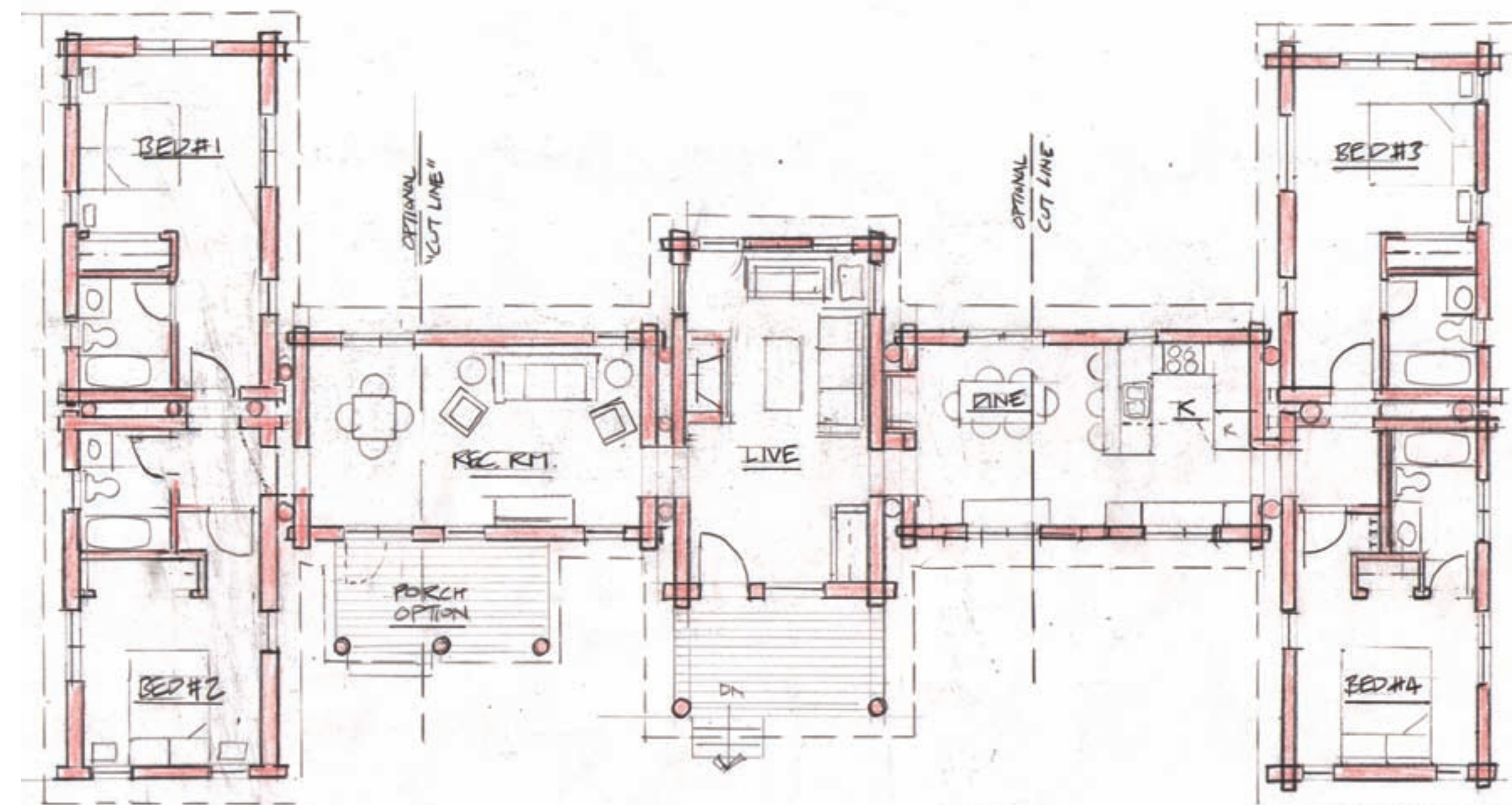
FRONT ELEVATION

SCALE: 1/8" = 1'-0"



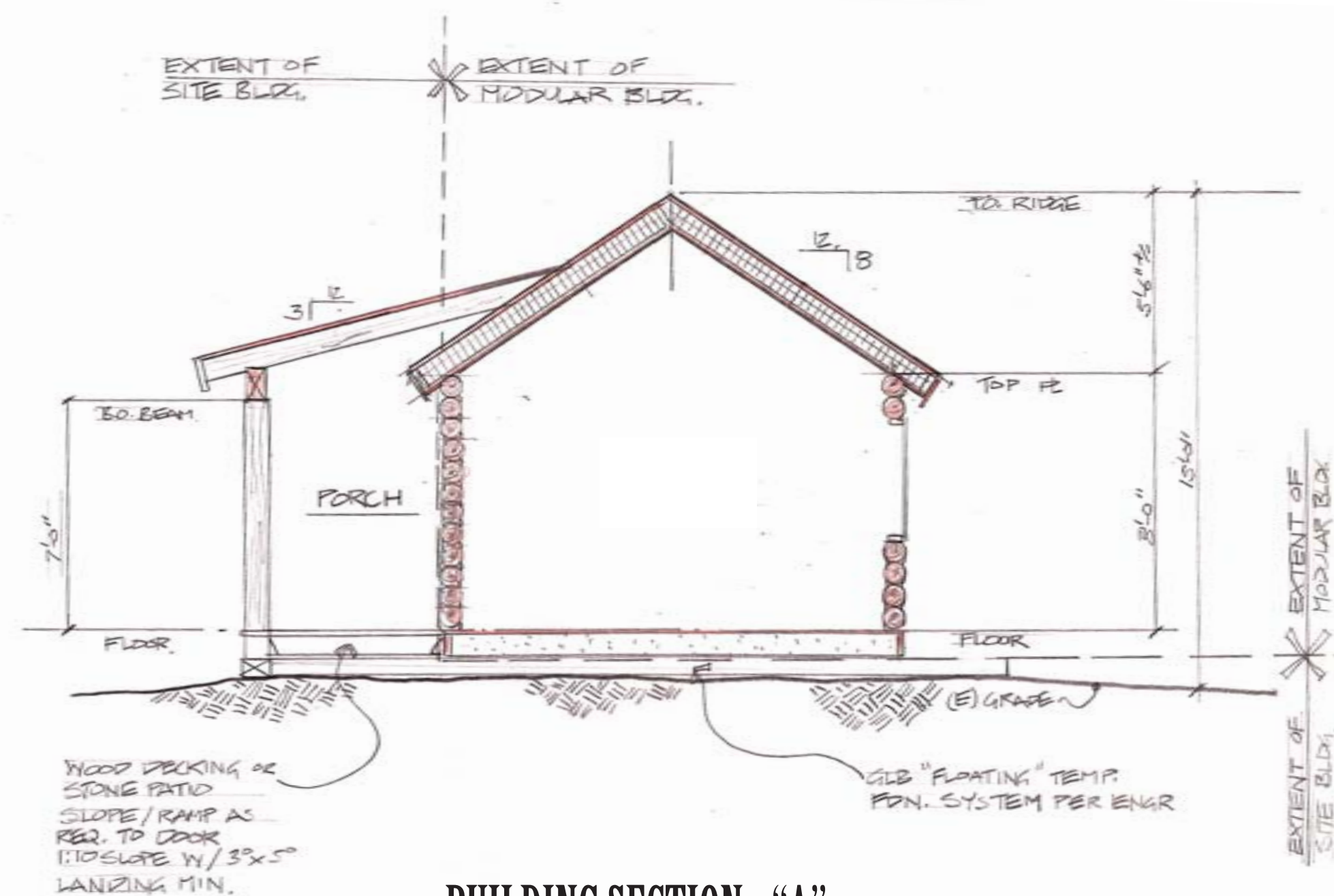
FLOOR PLAN - OPTION

SCALE: 1/8" = 1'-0"



FLOOR PLAN

SCALE: 1/8" = 1'-0"



BUILDING SECTION - "A"

SCALE: 1/4" = 1'-0"

Notes:

1. The optional cut line represents the ability to use a shorter standard cabin module. This would make this design have a kitchen module, dining module, and living module.
2. Porches can be added to the ends of the design. The porch options are: shed porches or gabel porches. Both porch styles are shown on the "base" elevation.

WYOMING CABIN CONCEPT



Your Cabin in the woods.



REVISIONS:

DATE:
19 MARCH, 2009

1