



# PIONEER CABIN COMPANY

ARCHITECTURALLY AUTHENTIC LODGING.

## The HCR Cabin

### QUICK FACTS:

Size	18'x26' 468sf.
Fully engineered	Wind: 90mph, Seismic: 'C', Snow: 85 psf
Classification	Residential
Starting Price	TBD

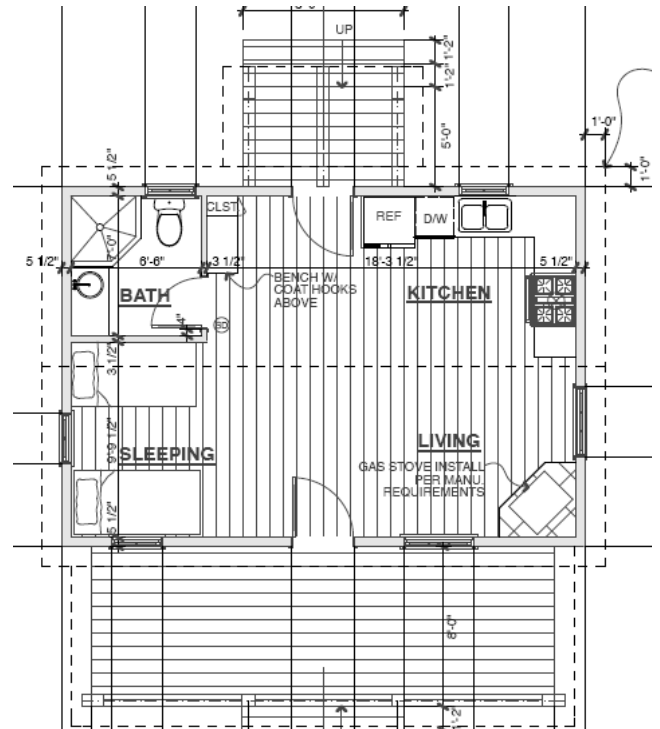
### DESCRIPTION:

The HCR Cabin is stick framed with a truss roof. Both porches feature reclaimed rough sawn beams. All soffit, ceilings, floors, trim, siding and doors are made of reclaimed barn wood. Exterior wainscot and roofing are corrugated steel with custom patina.

### IMAGES / RENDERINGS:



### PLANS: Available for Sale



Pioneer Cabin Company, LLC

208.726.8347 [info@pioneercabincompany.com](mailto:info@pioneercabincompany.com)

105 Lewis Street Suite 101 Ketchum, ID 83340 Box 3430 Hailey, ID 83333

Visit our website at [www.pioneercabincompany.com](http://www.pioneercabincompany.com)



PIONEER CABIN COMPANY