



# PIONEER CABIN COMPANY

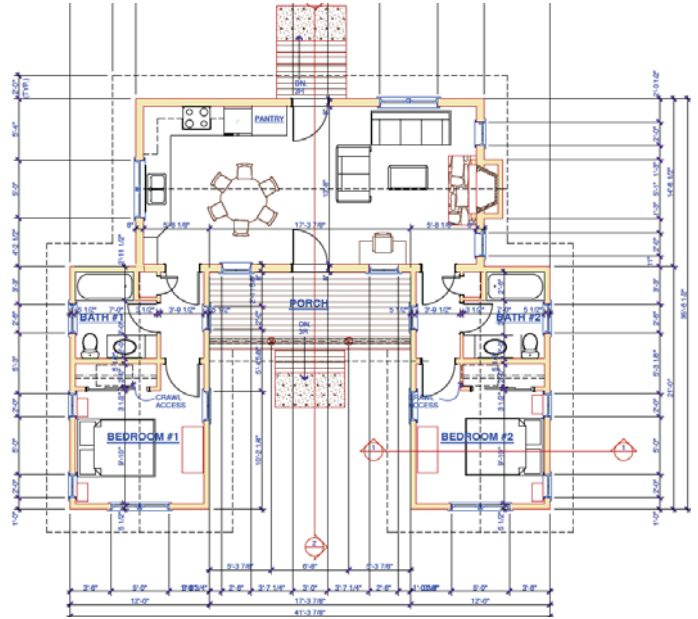
ARCHITECTURALLY AUTHENTIC LODGING.

## The Yellowstone Retreat

### QUICK FACTS:

Size	17'x30' main, 12'x21' annexes Total: 1014sf
Fully engineered	Wind: 90 mph, Snow: 128 psf, Seismic: D
Classification	Residential
Starting Price	\$TBD

### PLANS: Available for Sale



### DESCRIPTION:

The Yellowstone Retreat is comprised of a main living building constructed of hand hewn timbers with a SIPs roof and two bedroom annexes which are stick framed with truss roof details. A zero clearance chimney is the centerpiece of the living area.

### IMAGES / RENDERINGS:



Pioneer Cabin Company, LLC

208.726.8347 info@pioneercabincompany.com

105 Lewis Street Suite 1 Ketchum, ID 83340 Box 3430 Hailey, ID 83333

Visit our website at [www.pioneercabincompany.com](http://www.pioneercabincompany.com)



PIONEER CABIN COMPANY