



# PIONEER CABIN COMPANY

ARCHITECTURALLY AUTHENTIC LODGING.

## The Spike Camp Cabin

### QUICK FACTS:

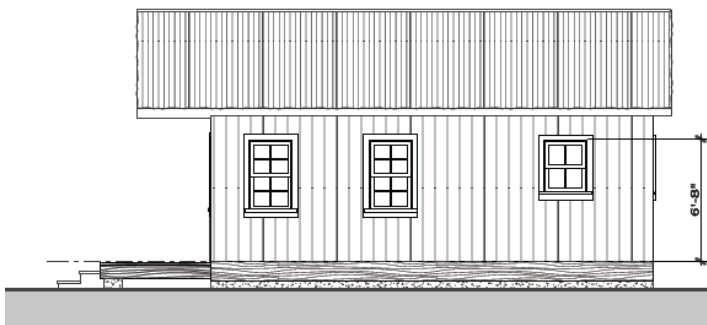
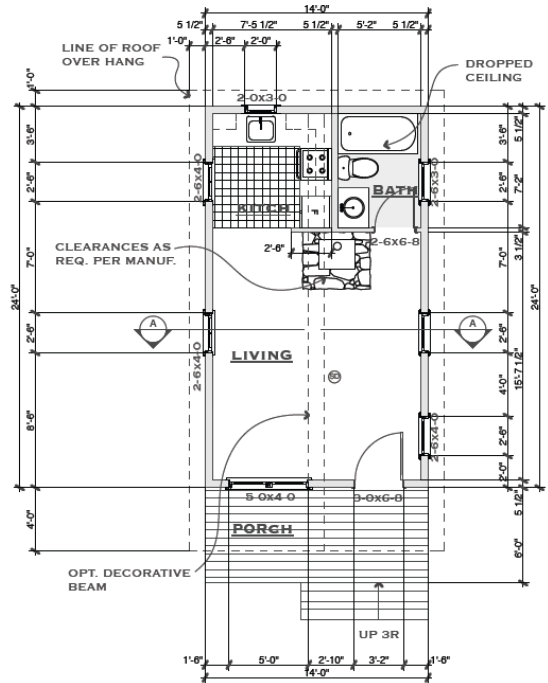
Size	14'x24' or 16'x24' 336sf of 384sf
Fully engineered	Wind: 115mph, Seismic: 'D', Snow: 150 psf
Classification	Modular, Residential
Starting Price	TBD

### PLANS: Available for Sale

### DESCRIPTION:

The Spike Camp is stick framed and sided with reclaimed barn wood and a corrugated metal wainscot with custom patina. The roof construction consists of a log ridge with Structurally Insulated Panel roof system or can be trussed and insulated. Interior finishes include reclaimed barn wood materials and accents throughout. Walls are finished with wood wainscot and a drywall upper with American Clay

### IMAGES / RENDERINGS:



Pioneer Cabin Company, LLC

208.726.8347 info@pioneercabincompany.com

105 Lewis Street Suite 101 Ketchum, ID 83340 Box 3430 Hailey, ID 83333

Visit our website at [www.pioneercabincompany.com](http://www.pioneercabincompany.com)



PIONEER CABIN COMPANY