



# PIONEER CABIN COMPANY

ARCHITECTURALLY AUTHENTIC LODGING.

## The South Fork Barn

### QUICK FACTS:

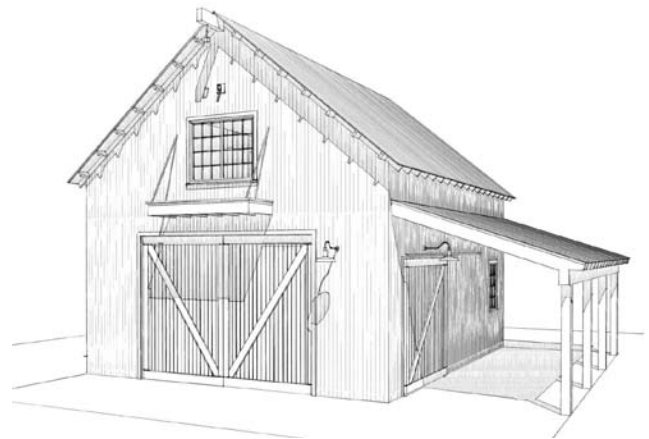
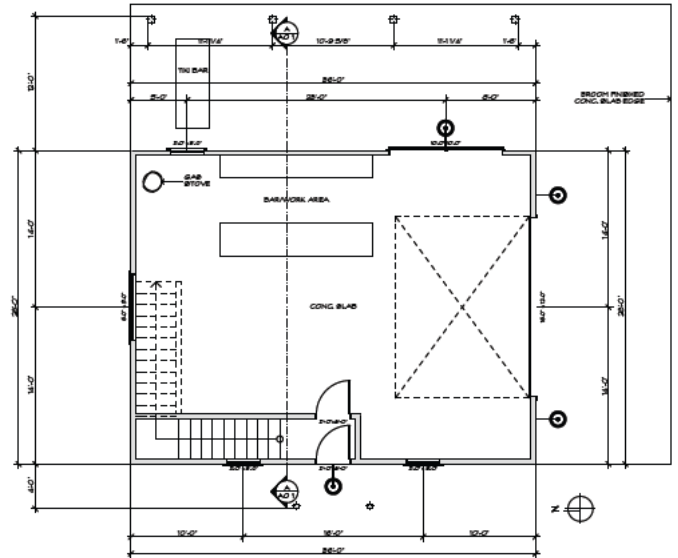
Size	28'x36' 1008 sf
Fully engineered	Wind: 90 mph, Snow: 150 psf, Seismic: D
Classification	Residential
Starting Price	\$TBD

### DESCRIPTION:

The South Fork Barn functions as a storage and shop area on the lower level and features a bonus living area on the second level. The building is stick framed with a truss roof system and uses all reclaimed siding and roofing material rescued from old buildings. A complete off-grid power system operates the compound.

### IMAGES / RENDERINGS:

### PLANS: Available for Sale



Pioneer Cabin Company, LLC

208.726.8347 info@pioneercabincompany.com

105 Lewis Street Suite 1 Ketchum, ID 83340 Box 3430 Hailey, ID 83333

Visit our website at [www.pioneercabincompany.com](http://www.pioneercabincompany.com)



PIONEER CABIN COMPANY